

Figure 32. Massive, heterogeneous flow-banded glass with distinct schlieren, enclosing an angular fragment of highly shocked pyroxene(?) which shows strongly mosaic extinction and possible partial isotropization along dark fractures. Fragment 318,37; plane polarized light; scale bar 0.1 mm.

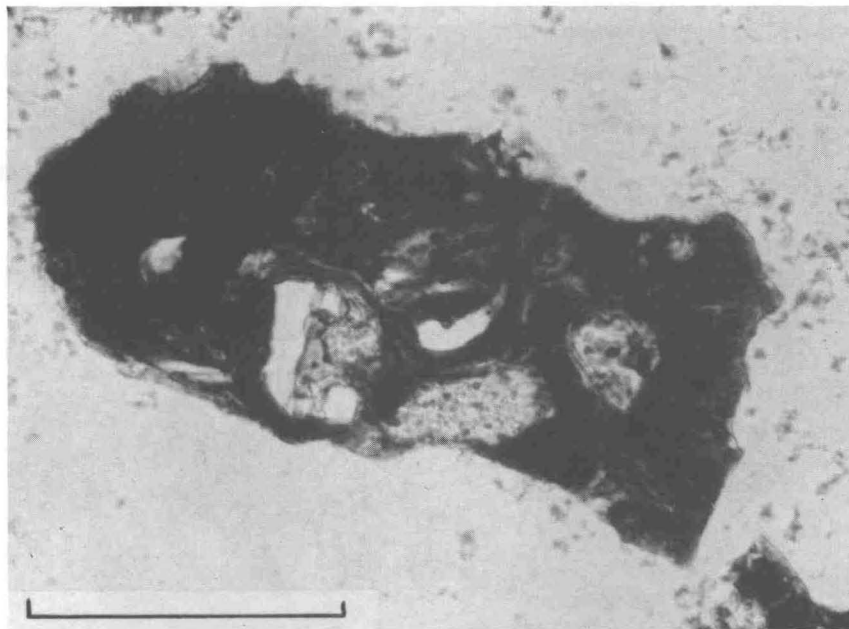


Figure 33. Heterogeneous dark-brown flow-banded glass with partly melted and absorbed inclusions of plagioclase (white, lower center and right) and pyroxene (gray, upper left and upper right). The plagioclase inclusions are partly melted to light greenish and colorless vesicular glasses, forming clear patches and schlieren that are being absorbed into the surrounding glass. Fragment 318,462; plane polarized light; scale bar 0.1 mm.

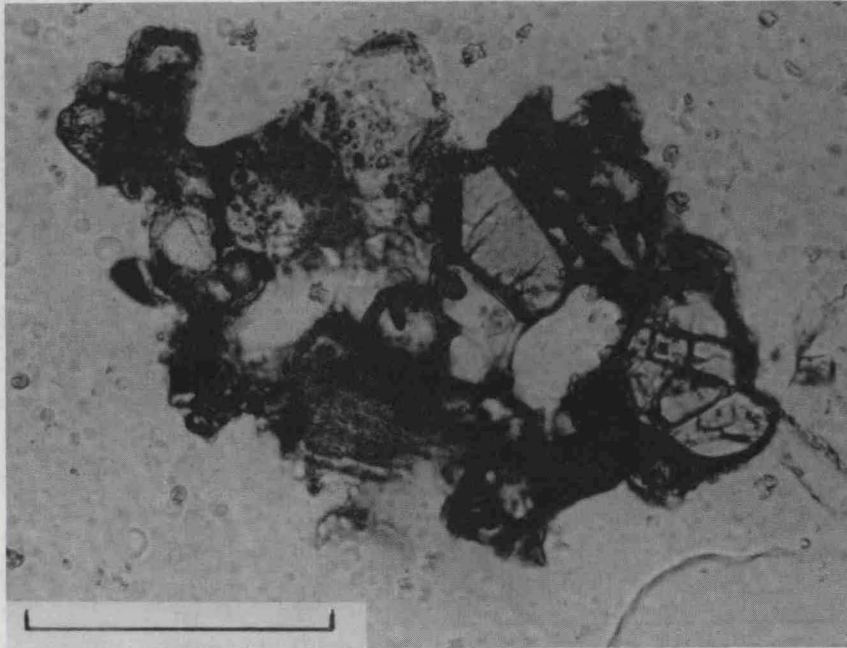


Figure 34. "Glazed aggregate" particle consisting of several mineral fragments cemented by a vesicular matrix of brown glass. Mineral inclusions are pyroxene (gray) and plagioclase (white). The plagioclase grains (upper and left center) are partly converted to colorless vesicular glass. Fragment 318,320; plane polarized light; scale bar 0.1 mm.

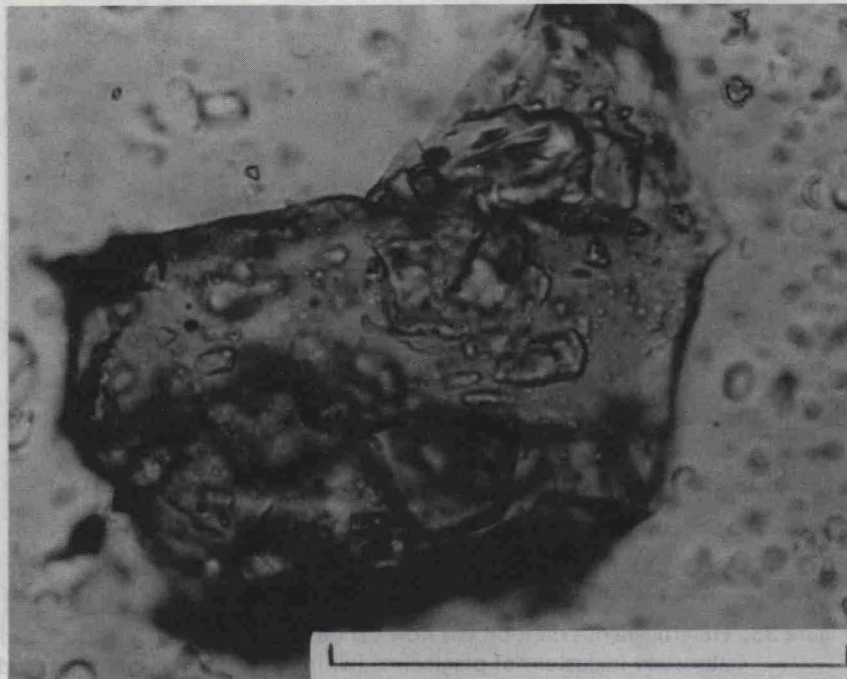


Figure 35. Pale yellow-green glass fragment containing small approximately equant quench(?) crystals (olivine?). Fragment 318,541; plane polarized light; scale bar 0.1 mm.